



Dr D Y Patil Educational Enterprises Charitable Trust's

## Dr D Y PATIL SCHOOL OF MANAGEMENT

(Approved by AICTE, New Delhi Recognized by Govt. of Maharashtra, Affiliated to Savitribai Phule Pune University)

AISHE Code: C-48357 DTE Code: MB6189 SPPU PUN Code: IMMP015810

(Accredited by NAAC)

### 7.1.2 - The Institution has facilities for alternate sources of energy and energy conservation measures

1. Alternate sources of energy and energy conservation measures
2. Management of the various types of degradable and non-degradable waste
3. Water conservation
4. Green campus initiatives
5. Disabled-friendly, barrier free environment

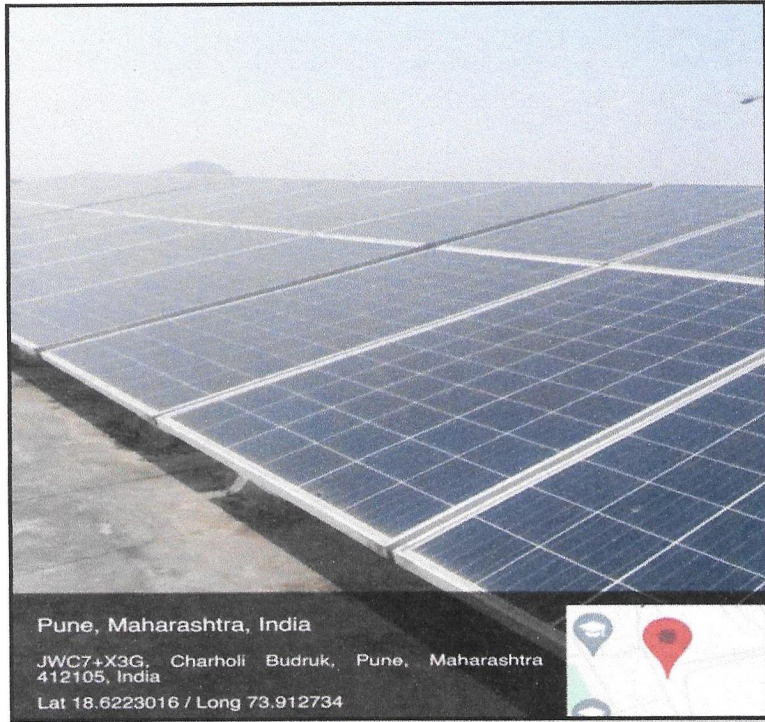
#### A) Alternate sources of energy and energy conservation measures-

##### 1) Solar energy



Solar energy sites at DYPSOM





Solar Panels on DYPSOM rooftop



Wheeling to Grid at DYPSOM



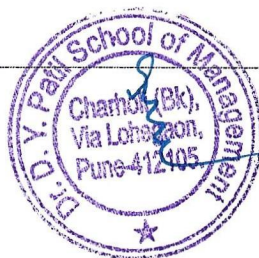
## 2) Use of LED lights



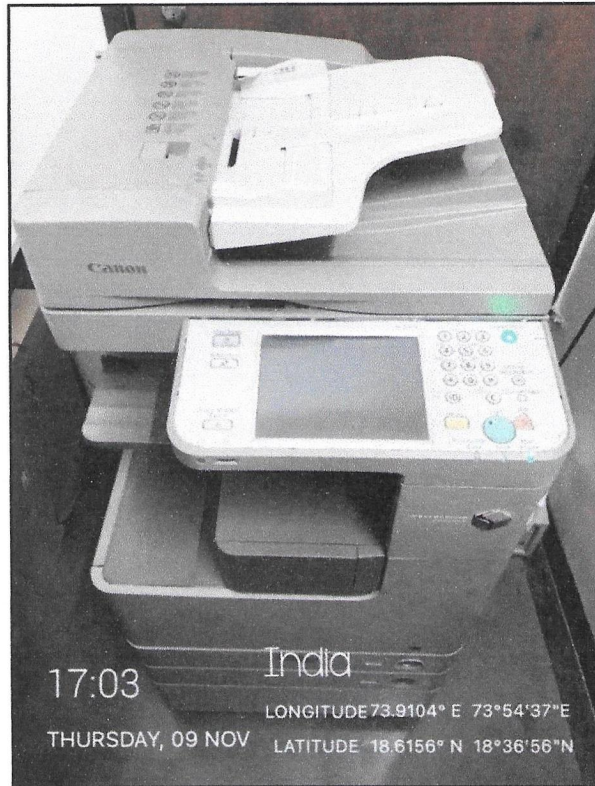
LED lightings at DYPSON



LED lightings at DYPSON



**3) Photocopier machine with energy saver mode**



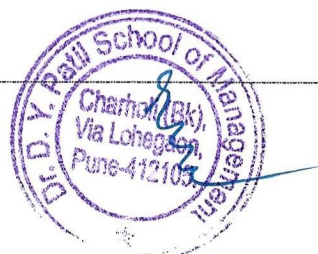
Photocopier at DYPSOM with energy saving

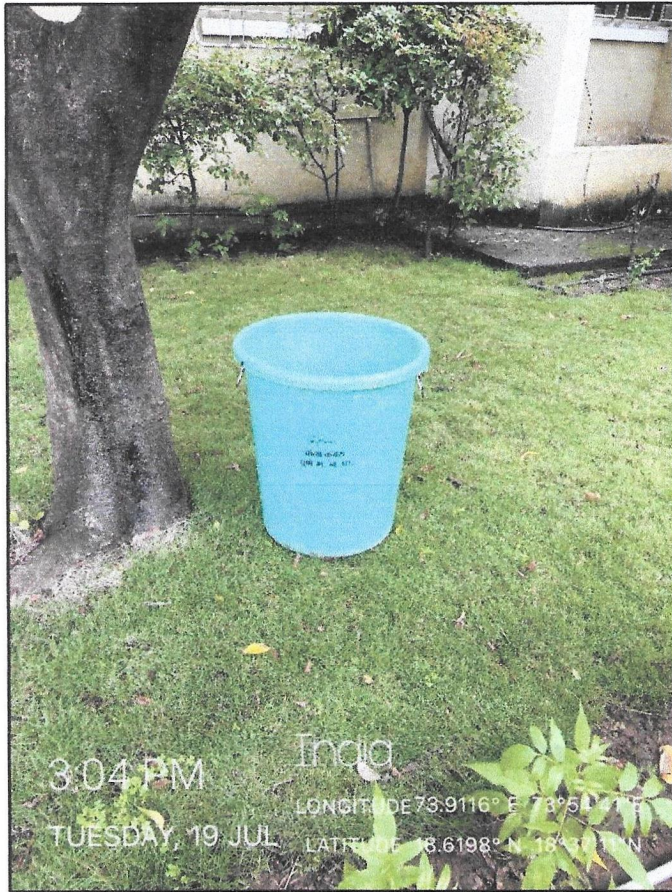
**B) Management of the various types of degradable and non-degradable waste**

**1) Biogas Plant**



Biogas plant at campus



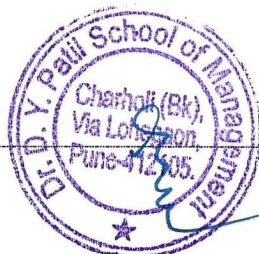


Dustbins at campus

**Biocompost Pit**



Biocompost Pit at Campus



**C) Water conservation- Rain Water Harvesting**

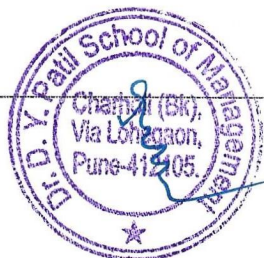


**Rainwater Harvesting at campus**

**D) Green campus initiatives**



**Landscaping at campus**

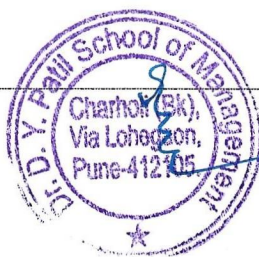




Landscaping at campus



Landscaping at campus



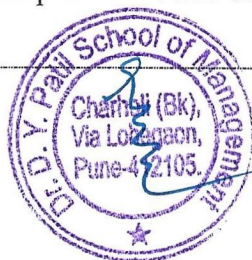
E) Disabled-friendly, barrier free environment



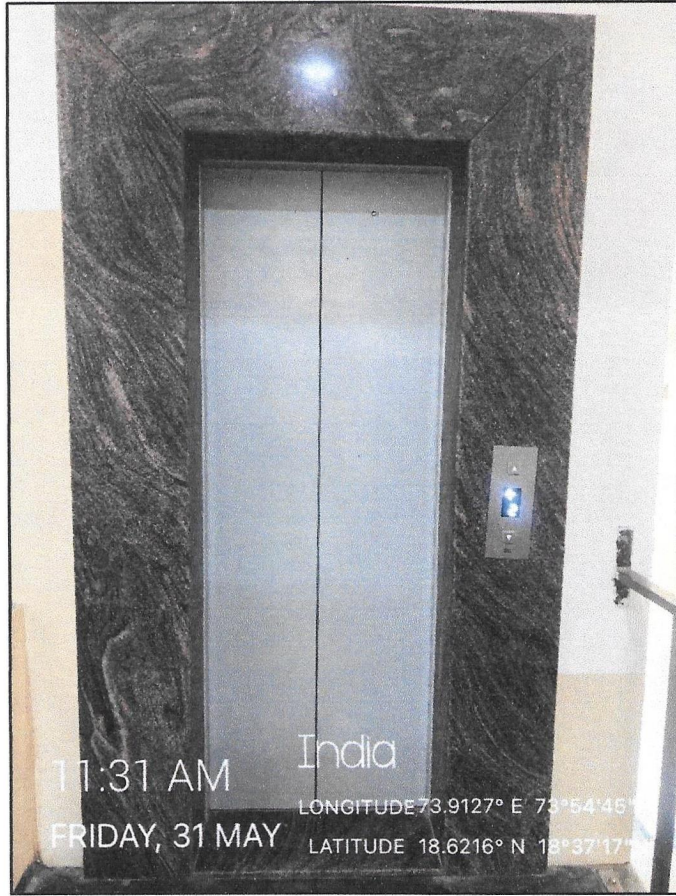
Ramp at DYPSOM entrance



Ramp at DYPSOM entrance







Lift at DYPSON building





Divyangjan friendly washrooms



Divyangjan friendly washrooms

